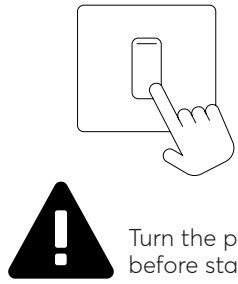
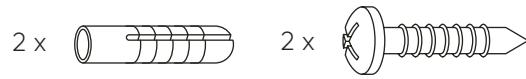
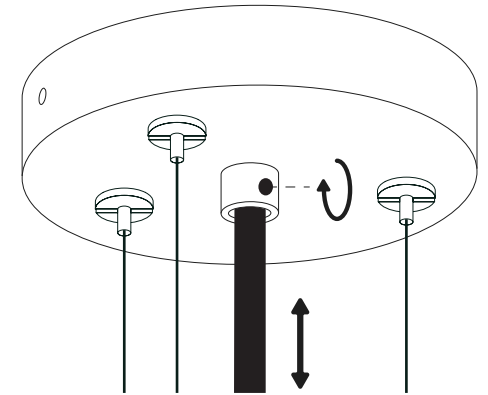
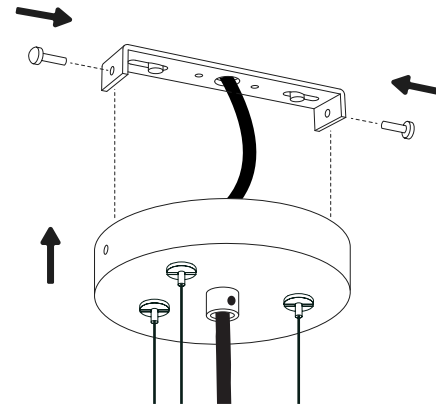
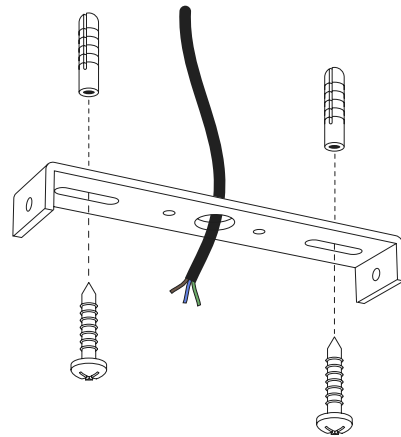


# You Will Need

(not included)

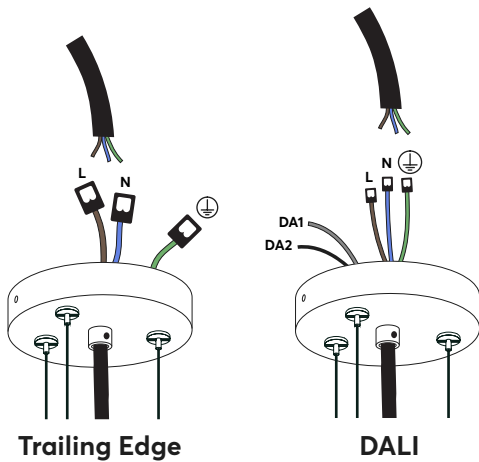


Turn the power off before starting!

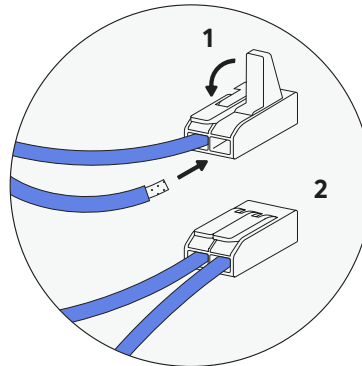


- 1 Before starting, please read the guidance on the back of this leaflet.
- 2 Drill holes and insert wall plugs. Line up the bracket, thread cable through and screw in place.

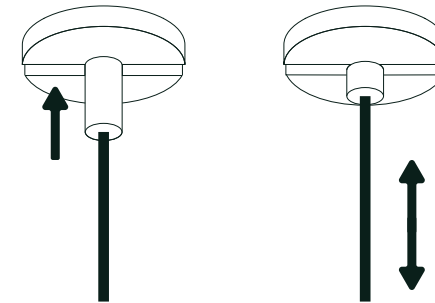
- 4 Connect the ceiling canopy to the bracket.
- 5 Use the side-screw to fine adjust the length of the cable.



Strip the cable  
8-12mm  
[www.wago.nl](http://www.wago.nl)  
(for more info)



- 3 The above diagram shows two dimming options (DALI and Trailing Edge). Strip 8-12mm of the cable, exposing the wires. Insert the electrical cable into the wago connector and flip closed.



- 6 To adjust the length of the steel wires, press down to release the tensioning cable. **Your light is now ready to use!**

**Thank you for your purchase!**

**Please read this manual carefully to ensure a safe and correct install of your light.**

- The manufacturer is not responsible for damage caused by incorrect installation.
- Always turn the power off before installation, carry out maintenance or repairs.
- If in doubt, contact a qualified electrician.
- Keep light away from liquid or flammable objects.
- When installing, make sure cables are not crushed, damaged or corroded.
- If a cable is damaged, it must be replaced by a trained professional.
- This product contains an integrated LED light source, which can only be replaced within its 2 year warranty.



Assembled inside box

Material: PET Felt

Ceiling Rose: Black Metal

Weight: 3.3KG

IP20

CCT: 2700/3000/4000/Tunable White

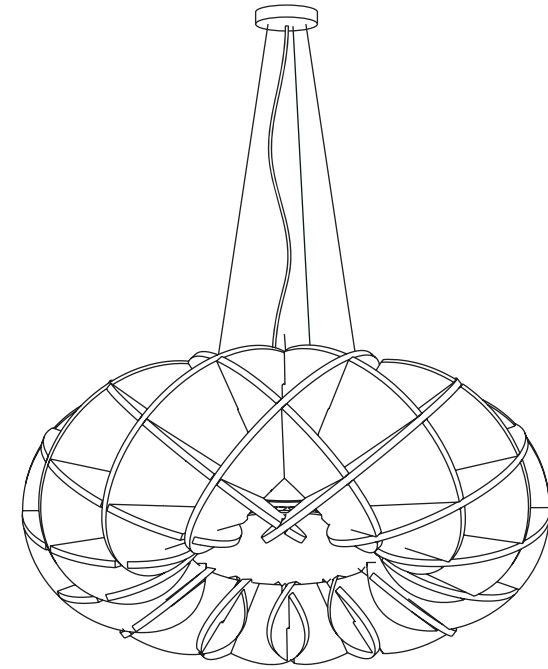
Dimming: DALI/Trailing Edge

lumēnear

Zoeterwoudseweg 21D • 2321 GM Leiden • The Netherlands  
+31 (0)715352210 • [info@lumenear.com](mailto:info@lumenear.com) • [www.lumenear.com](http://www.lumenear.com)

# lumēnear

## Acoustic Lighting



# Halo 700

## Installation Guide